

## EA520 4-Slot Terminal Cradle



### Quick Start Guide

V1.0

#### ► Package

Please make sure the following contents are in the EA520 4-Slot terminal cradle gift box. If something is missing or damaged, please contact your Unitech representative.

#### ► The Package Contents

- EA520 4-slot Terminal Charging Cradle
- Default detachable cover on the cradle for EA520 without boot case\*4
- 12VDC 5A power supply (#1010-900068G)

#### ► Optional Accessories

- 3 Pins Power Cord (US)
- 3 Pins Power Cord (EU)
- 3 Pins Power Cord (UK)

#### ► LED Indicator Status



#### Cradle Power LED

LED Status	Description
Solid Green Light	Power supply is connected.
LED Off	Power supply is not connected.

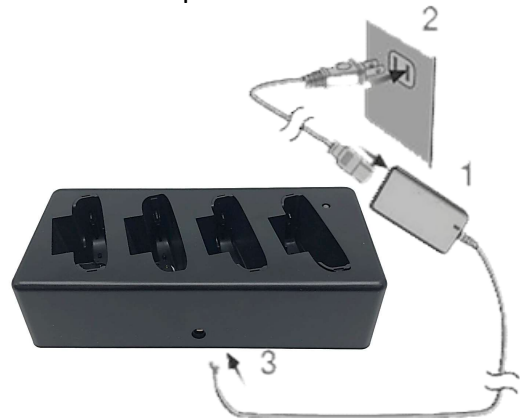
**Note:** When EA520 is inserted in the cradle, the LED indicator on the cradle will not be changed. For charging status, see LED on EA520.

#### EA520 LED

LED Status	Description
Solid Red Light	Charging
Solid Green Light	Charging completed.

#### ► Charging the Battery

Plug the AC adapter cable into the power jack on the battery charger, and then plug the other end of the AC adapter into an electrical outlet.



Put EA520 into the cradle following the picture below.



## The detachable cover



### ▶ How to Insert the Detachable Cover

Insert the detachable cover into the cradle. Make sure the arrows of the cover matches with the cradle (Please refer to the picture below).



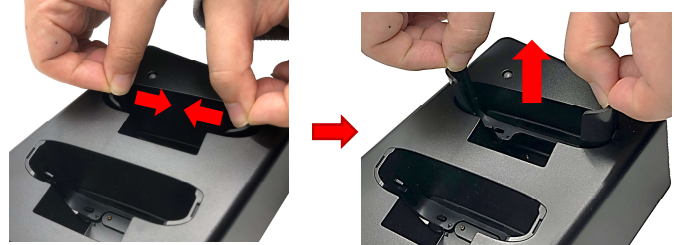
#### **CAUTION!**

To ensure the unit working properly, please keep all connectors away from the contaminants such as dust, grease, mud, and water. Negligence may cause the unit to lose communication, short circuit, or overheated. If the connector is damaged, please ensure the connector is fully repaired before using the unit to avoid short circuit.

### ▶ How to Remove the Detachable Cover

**Note:** Please remove the detachable cover while charging EA520 with boot case on.

1. Grab the two top edges of the detachable cover and bent inward then lift to remove.



#### **WARNING!**

There is a risk of fire and burns if the battery is handled improperly. DO NOT disassemble, crush, puncture, short external contacts, or dispose the battery pack in fire or water. DO NOT attempt to open or service the battery. Dispose used batteries according to local recycling guidelines in your area.



<http://www.ute.com/>

Copyright 2022 unitech Electronics Co., Ltd. All rights reserved. Unitech is a registered trademark of Unitech Electronics Co., Ltd.