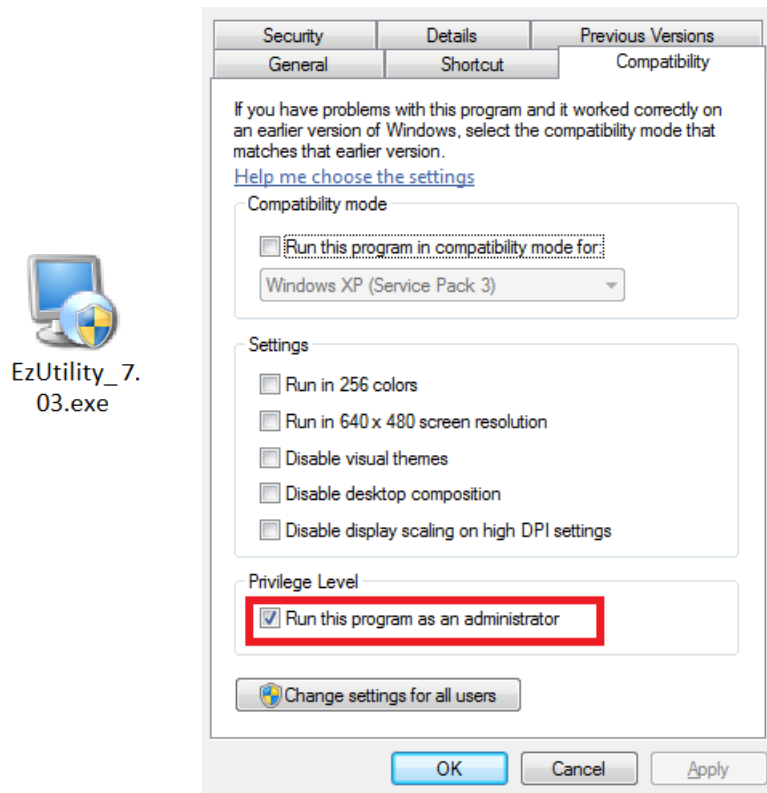


1. Right-click on [EzUtility_7.03.exe](#) and tick 'Run this program as an administrator' in the pop-up menu. Complete the installation by double-clicking on the [EzUtility_7.03.exe](#).



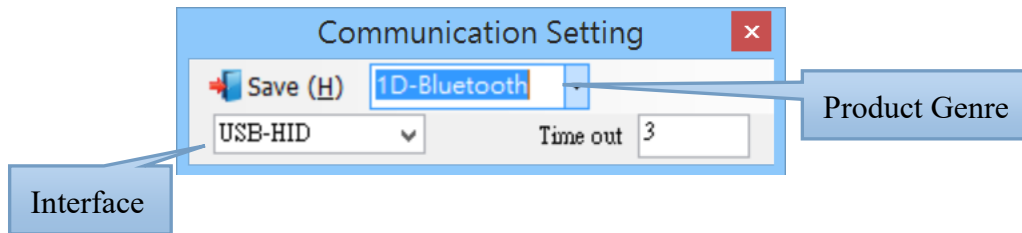
2. After successful installation, please also right-click on the shortcut icon of [Ez Utility](#) on the desktop and tick 'Run this program as an administrator' in the pop-up menu.



3. Connect the scanner and the host with USB cable.
4. Scan [\[.C008\\$\]USB-HID](#) below to switch to USB-HID interface. If the scanner is already in USB-HID mode, please skip this step.



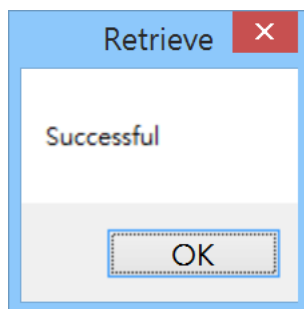
- Run **Ez Utility**, select Product Genre as appropriate (see below Table 1 for details), select “**USB-HID**” as Interface, keep Time out as is, and click [Save (H)] to continue.



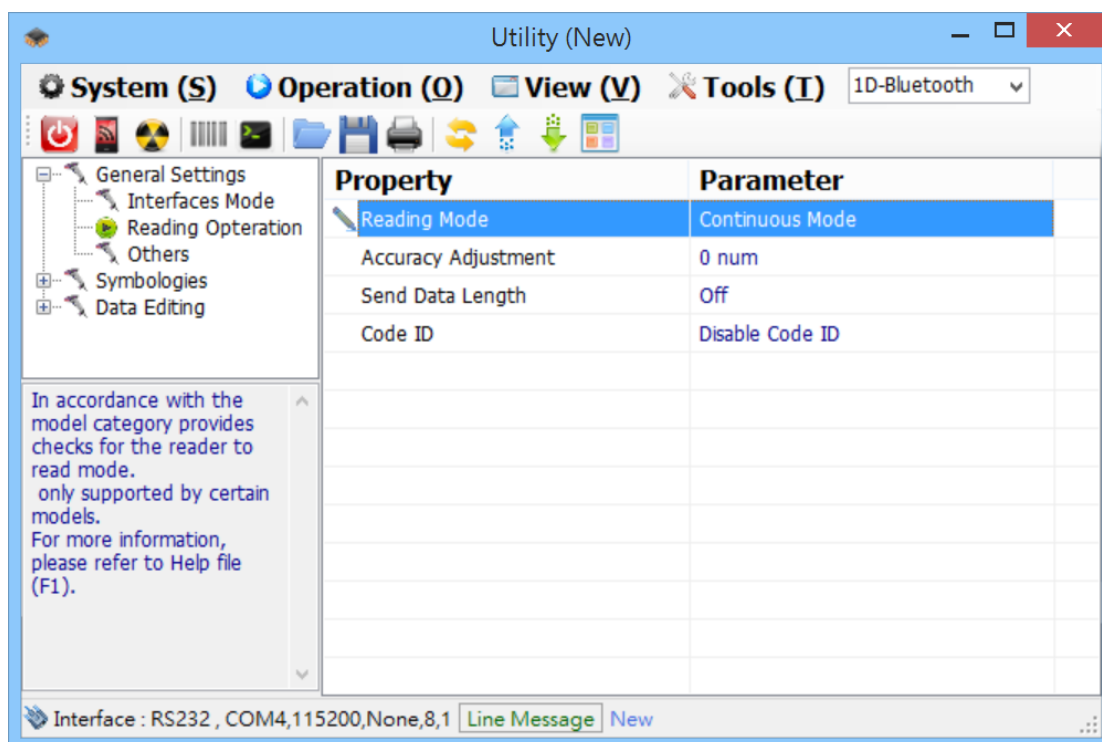
< Table 1: Product Genre & Corresponding Models >

Product Genre	Corresponding Model(s)
General	MS100, MS120, MS146 (FW: FM3-b-x.xx)
1D-Bluetooth	MS650 MS910+ (FW: SM3-c-x.xx.BTA-UT) MS912+ (FW: SM3-c-x.xx.BTA(.MEM)-UT)
New	MS925 MS910+ (FW: HM3-c-x.xx.BTA-UT) MS912+ (FW: HM3-c-x.xx.BTA(.MEM)-UT) MS100, MS120, MS146 (FW: HM3-b-x.xx.R1)

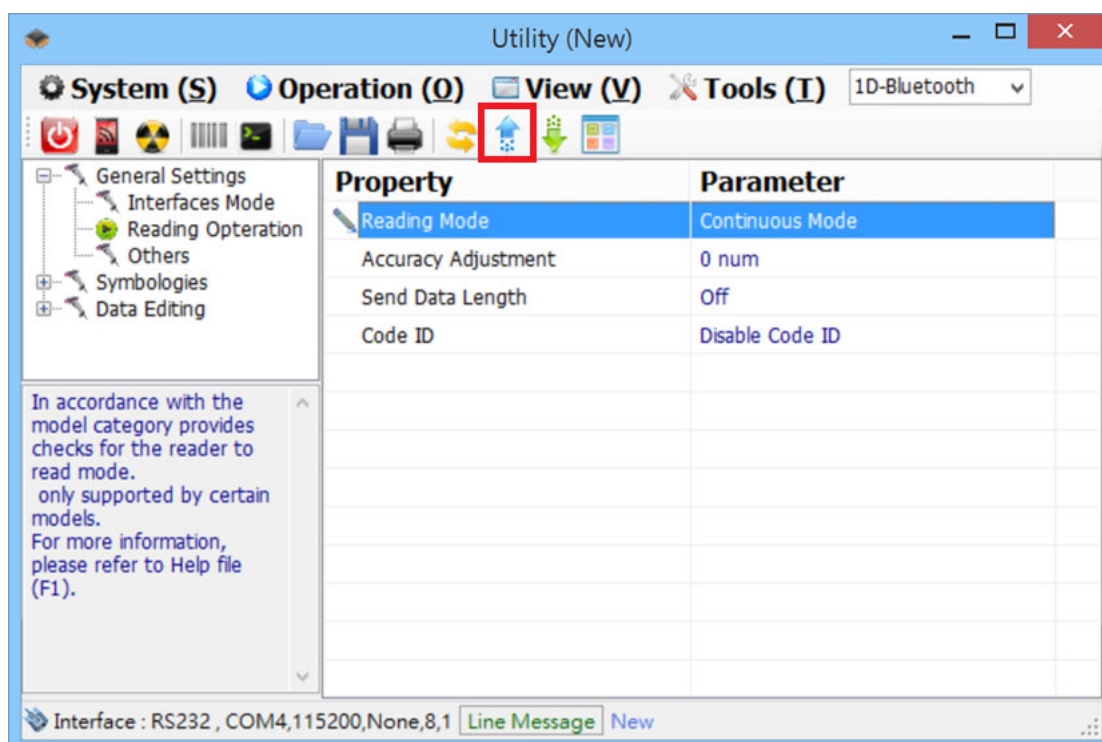
- The program will automatically retrieve configuration from the scanner. If the retrieval is successful, you will see below dialog.



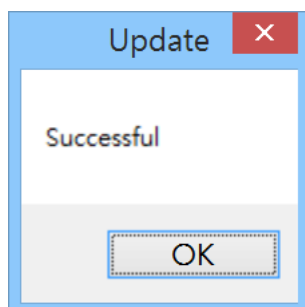
7. Double click on desired parameters to edit and the press [Enter] to save changes.
Below is an example.



8. Click the Up Arrow on the Toolbar to upload configuration to the scanner.



9. Below dialog indicates that your edited configuration is successfully uploaded to the scanner. Now you may disconnect cable from the scanner.



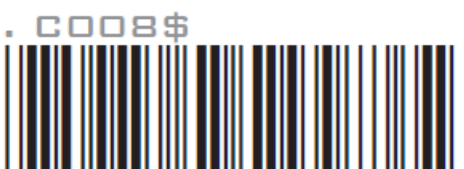
10. Scan one of the barcodes below to switch the scanner back to the desired interface.
If the scanner is designed to work in USB-HID mode, please skip this step.



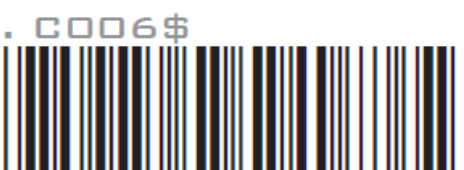
BT HID



BT SPP



USB HID



USB VCP